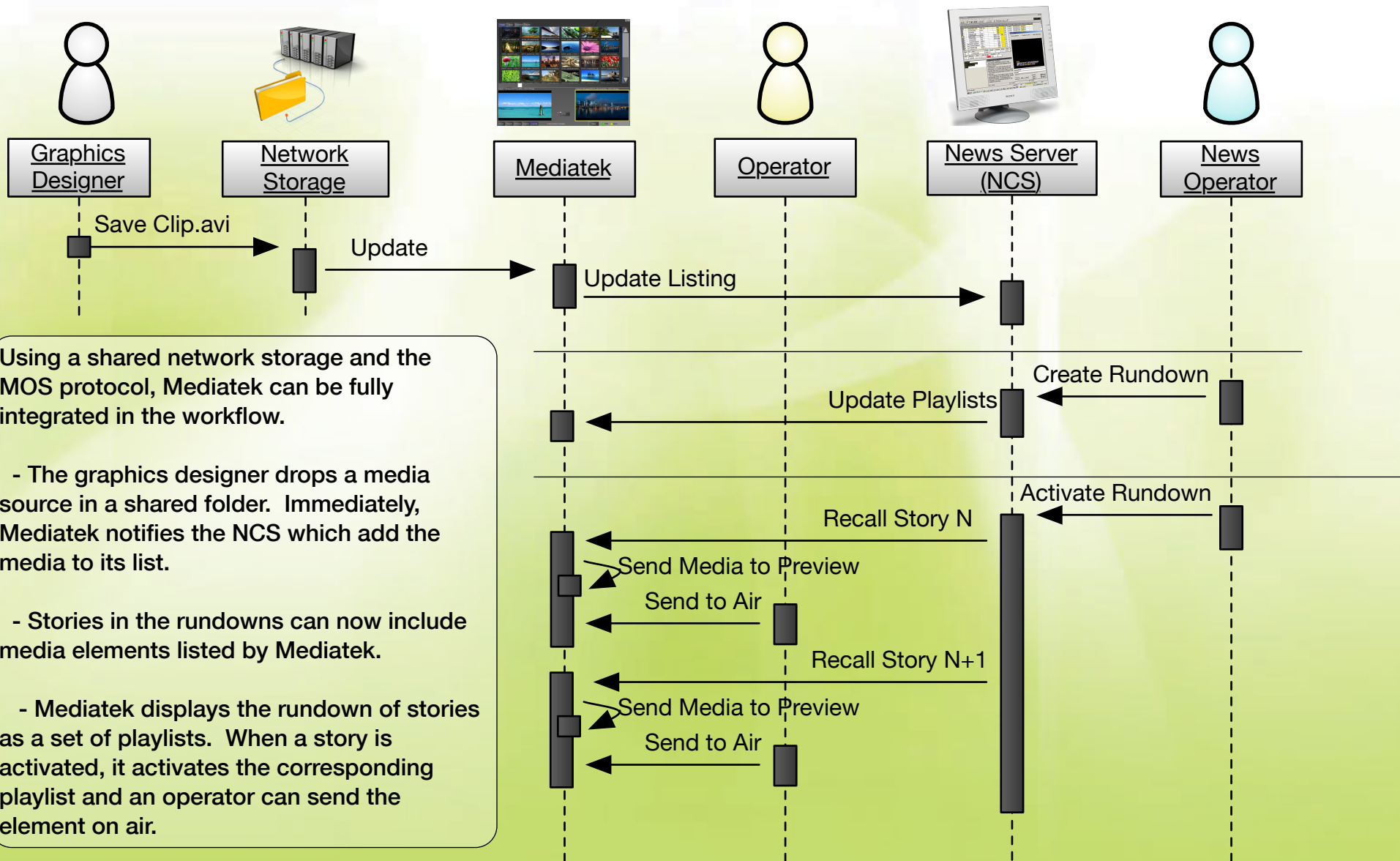


# Integration of Mediatek with a News Server



Using a shared network storage and the MOS protocol, Mediatek can be fully integrated in the workflow.

- The graphics designer drops a media source in a shared folder. Immediately, Mediatek notifies the NCS which add the media to its list.
- Stories in the rundowns can now include media elements listed by Mediatek.
- Mediatek displays the rundown of stories as a set of playlists. When a story is activated, it activates the corresponding playlist and an operator can send the element on air.